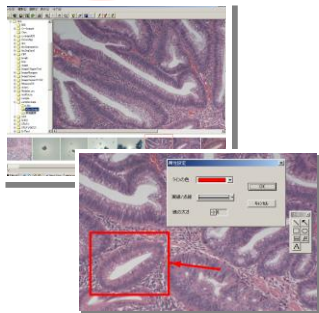


Integrated system of a series of functions of digital microscope images, management analysis, measurement, etc.

Basic functions



Strengthen the high-frequency use function, and only a click of the mouse to complete the operation.

- **Document Management**

Through the form of tree folders and thumbnails, realize the intuitive file management .

- **Graphic inserting and depicting functions**

In addition to correcting the actual value or inserting ruler according to the length, we can edit with the arrow or square and text in the portrait.

- **Image measurement function**

Mesure a line or curve length that the mouse point to in the portrait, as well as the internal area of the closed curve.

In addition, measurement data can be output to the clipboard or external file.

- **Intimate interface and versatility**

The mouse operation will be able to use the various functions, such as pruning pictures, graphics transform and filtering. Besides, support multiple formats of inputing, outputing, and directly read from the scanner.

R & D the integrated software of object separation, counting and measurement.

- **Chromosome segregation Template**

The template of repeating chromosome automatic, manual separation
Accurately separate automatically the X-type and T-type chromosomes, and measurement.

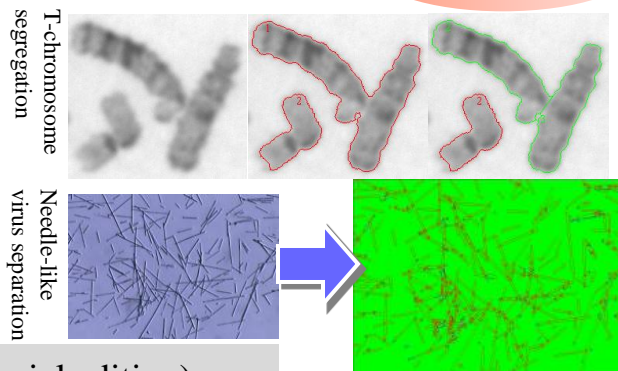
- **Template of separation of the needle-like virus**

Automatically identify the needle-like objects and determine whether an independent object.

- **Template of automatic separation of general images**

Developing the generic template of the separation and measurement of the objects,using the technology supported by Tokyo.

Image analysis



ImageClipper

Image recognition shear tool

Close image recognition shear

- Select the target file, automatically cut portrait
- Made the target image (stamp processing)
- Target marked
- the object contour correction of local image
- a large number of other image processing functions

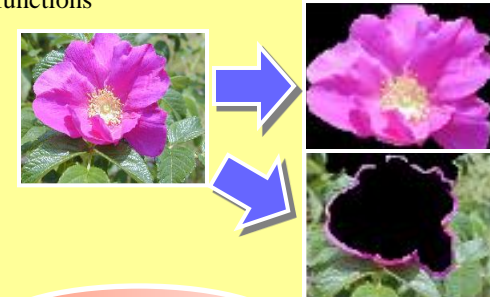


Image merger

Overlapping images can be converted to a merged image.
Flexibility merge images through the initial focus, distortion correction and image connectivity .

ImageStation Bio & Patho(Biological / pathological special edition)

The synthesis software of the image management, viewing, processing and multi-color fluorescence image of microscope images .

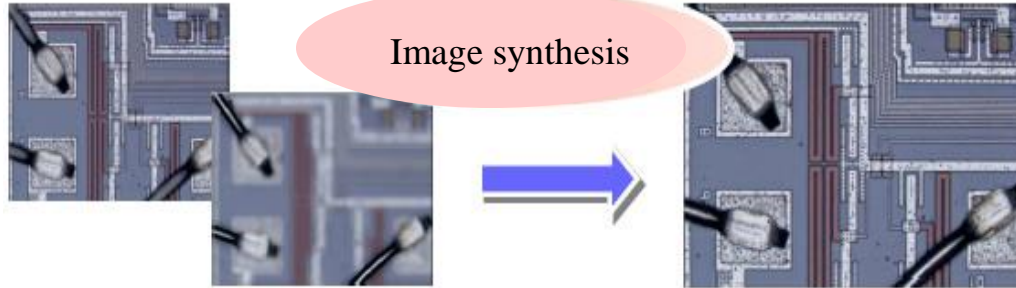
Main functions:

- Image management
- Multicolor fluorescence image synthesis
- Image contrast
- Relief processing
- Extract image edge
- Reversal of the image color
- Area measurement



Multifocus

The multifocal technology of corresponding multiple focal synthetic images

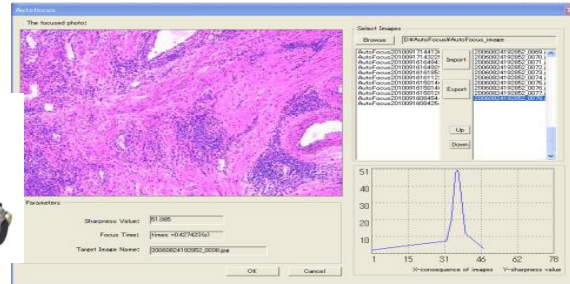
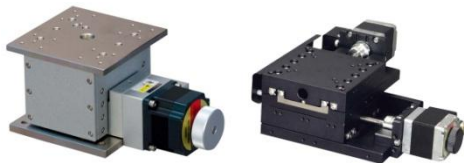


AutoFocus

The experiment confirmed that the automatically focus method can accurately identify the focus of the image. By changing the number of experimental images and the experimental conditions, quickly identifying the image of the highest evaluation value, local extreme values will not be incorporated in the data. The action is very fast ,which is basically controlled in less than 0.5s.If an increase in the experimental images, the time may be slightly extended.

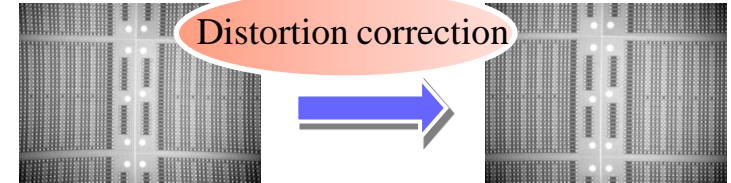
(System Requirements: AMD Athlon(tm)64 Processor

3200+ 2.01GHz、 1.0G、 VC6.0)



Lens distortion correction

The integral lens distortion correction function of image measurement and image processing.



Noise removal

Clear the noise of images taken by the cameras, microscopes and X-ray .



Color correction

The color correction is the correction to the blue or red spots of the edge of the image brightness, which is to improve the image quality indispensable function.



SuZhou BitStrong electronic technology Co.Ltd
 Image Processing Department
 E-Mail: Vision@bitstrong.com
 URL: <http://www.bitstrong.com/chinese/>
 Tel:0512-55271320 Fax:0512-55271330
 Postcode: 21530
 KunShan City WeiYe Road No.18 Modern Square Seat A Room
 616-617